

Doc Fizzix Products

Your complete source for mousetrap vehicle products
Designs by people who know mousetrap vehicles!

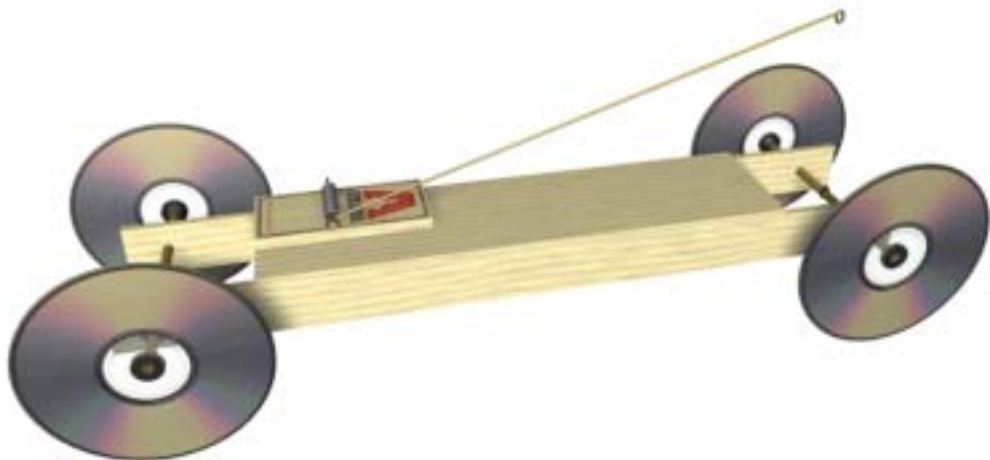
The Basic Kit

Item # K-100-DF

For ages 10 and up

Specifications

Retail price:	\$14.95
Package size:	22" x 5"
Built size:	21" x 6"
weight:	.36 lbs.
Travel distance	20-45 meters
Availability:	in stock
Case size:	5 per case



Key Features Include:

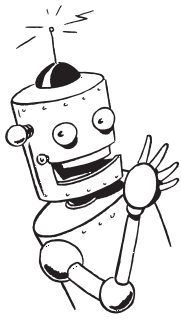
Our best selling MTV kit
Adaptable for all contest
Pre-cut and drilled Balsa wood
Step-by-step plans
High performance DVD layers
Designed for maximum success

Parts List:

Pre-cut and drilled balsa wood
Low inertia wheels
Wheel spacers
Brass tubing axles
Brass lever arm
Kevlar reinforced string
Low friction thrust bearings
Axle hook
Victor mousetrap
Step-by-step plans

The Basic Kit Mousetrap Racer

The Basic Kit is our top selling introductory mousetrap, vehicle kit designed for maximum success. *The Basic Kit* was originally designed as a distance racer, but can easily be adapted into a contest winning speed-trap racer, cargo carrier, hill climber, and more. *The Basic Kit* consists of an ultra lightweight pre-cut and drilled balsa wood frame with ultra low rotational inertia wheels. Because of its lightweight components, *The Basic Kit* requires a much smaller pulling force to keep moving; therefore utilizing a longer lever arm to extend the pulling force over a greater travel distance. One of the key features with *The Basic Kit's* success is its ultra low inertia DVD layer wheels. DVD layers have half the thickness and half the rotational inertia of normal CD wheels, therefore less energy gets stored in the wheels. *The Basic Kit* will travel further and faster than a similar vehicle using CDs or DVDs for wheels. *The Basic Kit* was designed and optimized for success by specialists who know mousetrap racers. Ready to assemble with a pre-cut and pre-drilled frame, *The Basic Kit* can be assembled in less than 30 minutes and will travel from 20-45 meters for most first time builders.



Doc Fizzix Products

Your complete source for mousetrap vehicle products
Designs by people who know mousetrap vehicles!

The Basic Kit II

Item # K-102-DF

For ages 10 and up

Specifications

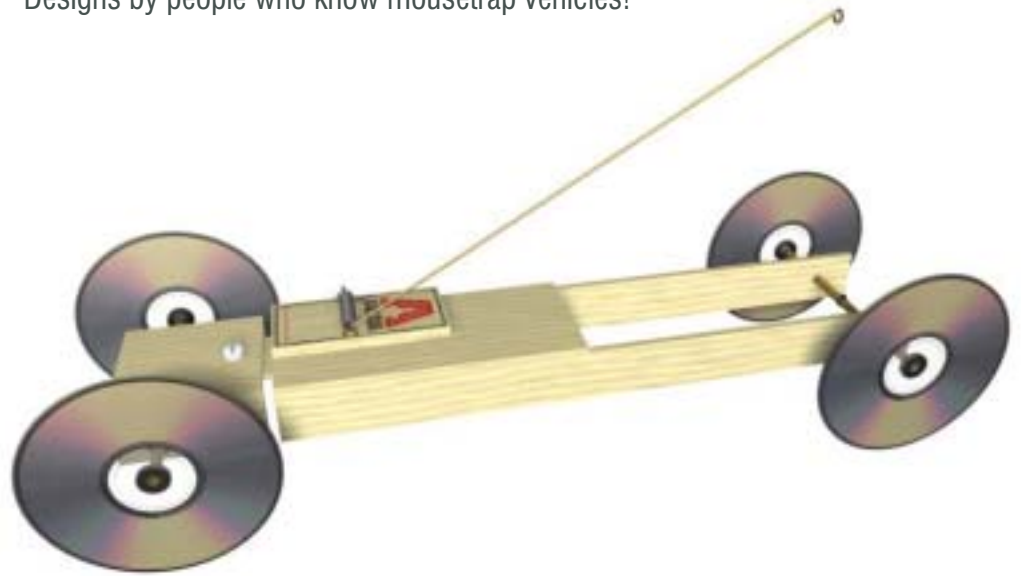
Retail price:	\$16.95
Package size:	22" x 5"
Built size:	21" x 6"
weight::	.43 lbs.
Travel distance	20-45 meters
Availibility:	in stock
Case size:	5 per case

Key Features Include:

- Adjustable Steering
- Reduced friction bushings
- Pre-cut and drilled Balsa wood
- Step-by-step plans
- High performance DVD layers
- Designed for maximum distance

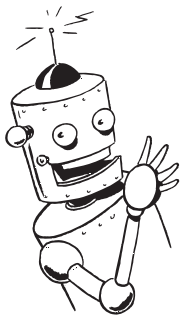
Parts List:

- Pre-cut and drilled balsa wood
- Low inertia wheels
- Wheel spacers
- Brass tubing axles
- Brass lever arm
- Kevlar reinforced string
- Adjustable steering linkage
- Low friction thrust bearings
- Axle hook
- Victor mousetrap
- Step-by-step plans



The Basic Kit II Mousetrap Racer

The Basic Kit II's design is based on the top selling Basic Kit but has several enhanced upgrades that allow the racer to travel much further than *The Basic Kit*. Two important upgrade features include: adjustable steering and low friction bushings. The key to building a successful mousetrap vehicle for distance is to eliminate friction between the axle and the frame. With *The Basic Kit II's* low friction bushings, less energy is lost to heat and sound, and more energy is converted into greater travel distance. For most mousetrap powered vehicles, the biggest problem a racer will face is steering straight down a long narrow hallway, most end-up hitting the wall. Adjustable steering gives *The Basic II*'s biggest advantage over the competition. *The Basic Kit II* can easily be adjusted so it will travel straight down any hallway in order to maximize the total travel distance. *The Basic Kit II* steering can also be adjusted to go in a complete circle of almost any size radius for other types of competition where traveling straight it not the objective. *The Basic Kit II* can be assembled in less than 30 minutes and will travel from 35-75 meters for most first time builders. *The Basic Kit II* is definitely the head of the class and a guaranteed winner!



Doc Fizzix Products

Your complete source for mousetrap vehicle products
Designs by people who know mousetrap vehicles!

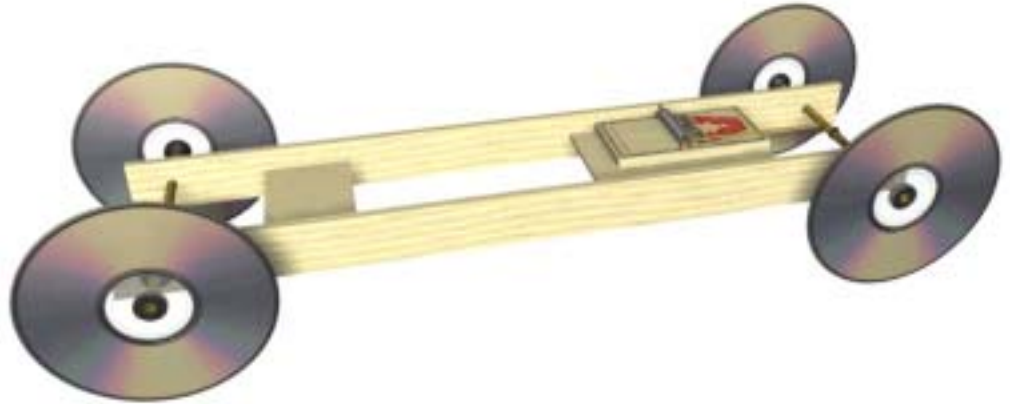
“Speedy”

Item # K-106-DF

For ages 10 and up

Specifications

Retail price:	\$14.95
Package size:	22” x 5”
Built size:	21” x 6”
weight::	.34 lbs.
Travel speed	5 meters in 2 sec
Availibility:	in stock
Case size:	5 per case



Key Features Include:

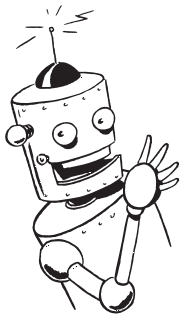
Designed for maximum acceleration
Pre-cut and drilled Balsa wood
Step-by-step plans
High performance DVD layers

Parts List:

Pre-cut and drilled balsa wood
Low inertia wheels
Wheel spacers
Brass tubing axles
Kevlar reinforced string
Low friction thrust bearings
Axle hook
Victor mousetrap
Step-by-step plans

“Speedy” Mousetrap Racer

Designed as a speed version of our top selling *Basic Kit*, *Speedy* will travel 5 meters in less than 2 seconds. *Speedy's* secret to success is it's very lightweight balsa wood frame used in combination with a short lever arm and low inertia wheels. Just like a top fuel dragster, *Speedy's* long front end helps the racer to travel straight and keeps the front of the racer from lifting off the ground, wasting energy. *Speedy* is designed to generate a tremendous amount of torque while maximizing the transfer of potential energy from the mousetrap into linear kinetic energy of motion. Because of the high amount of torque generated by *Speedy* by it's drive wheels, *Speedy* will also be a top contender in all hill climbing contests. One of the key features with *Speedy's* success is it's ultra low inertia DVD layer wheels. DVD layers have half the thickness and half the rotational inertia of normal CD wheels, therefore less energy gets stored in the wheels. “*Speedy*” will travel faster and further than a similar vehicle using CDs or DVDs for wheels. Just like all our kits, *Speedy* comes ready to assemble with a pre-cut and drilled balsa wood frame and can be assemble in less than 30 minuets.



Doc Fizzix Products

Your complete source for mousetrap vehicle products
Designs by people who know mousetrap vehicles!

Can-Dew

Item # K-107-DF

For ages 10 and up

Specifications

Retail price:	\$14.95
Package size:	22" x 5"
Built size:	21" x 6"
weight::	.35 lbs.
Travel distance	15-30 meters
Availibility:	in stock
Case size:	5 per case

Key Features Include:

Designed as a high torque racer
Will carry a full soda can 15m
Balsa wood frame
Step-by-step plans
High performance DVD layers
Comes ready to assemble

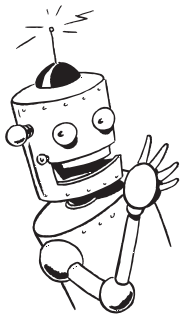
Parts List:

Pre-cut and drilled balsa wood
Low inertia wheels
Wheel spacers
Brass tubing axles
Brass lever arm
Kevlar reinforced string
Low friction thrust bearings
Axle hook
Victor mousetrap
Step-by-step plans



Can-Dew Mousetrap Racer

Designed as a high torque cargo carrier version of our top selling *Basic Kit*, *Can-Dew* is designed to carry a full soda can over 15 meters. *Can-Dew's* secret to success is its ability to generate a tremendous amount of torque at the drive wheels. *Can-Dew* is designed to maximize the transformation of potential energy from the mousetrap into linear kinetic energy of motion. Because of the high amount of torque that is generated by *Can-Dew* at its drive wheels, *Can-Dew* will also be a top contender in all hill climbing contests. One key feature of the *Can-Dew's* success is its ultra low inertia DVD layer wheels; DVD layers have half the thickness and half the rotational inertia of normal CD wheels, therefore, less energy gets stored in the wheels helping *Can-Dew* travel faster and further than a similar vehicle using CDs or DVDs for wheels. Just like all our kits, *Can-Dew* comes ready to assemble with a pre-cut and drilled balsa wood frame and can be assembled in less than 30 minutes.



Doc Fizzix Products

Your complete source for mousetrap vehicle products
Designs by people who know mousetrap vehicles!

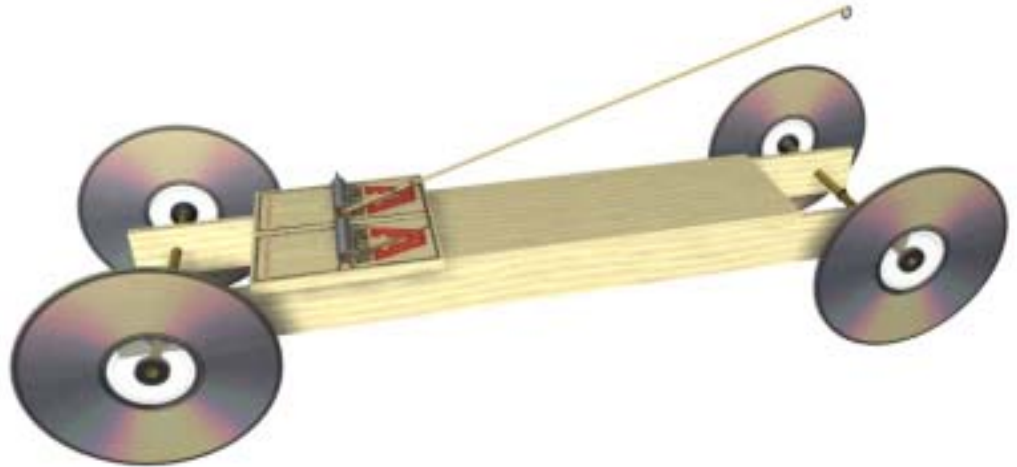
Double-Trouble

Item # K-108-DF

For ages 10 and up

Specifications

Retail price:	\$15.95
Package size:	22" x 5"
Built size:	21" x 6"
weight::	.43 lbs.
Travel distance	40-80 meters
Availibility:	in stock
Case size:	5 per case



Key Features Include:

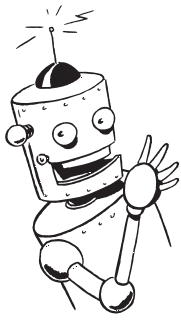
- Powered by two mousetraps
- Balsa wood frame
- Step-by-step plans
- High performance DVD layers
- Designed for maximum Distance

Parts List:

- Pre-cut and drilled balsa wood
- Low inertia wheels
- Wheel spacers
- Brass tubing axles
- Brass lever arm
- Kevlar reinforced string
- Low friction thrust bearings
- Axle hook
- Victor mousetrap
- Step-by-step plans

Double-Trouble Mousetrap Racer

Designed from our top selling *Basic Kit*, we have added a second mousetrap for twice the fun and twice the distance. The Double Trouble will travel 40-80 meters for most first time builders. Double-Trouble was originally designed for distance, but can easily be adapted into a contest winning, speed-trap racer, cargo carrier, hill climber, and more. Double-Trouble consists of an ultra light pre-cut and drilled balsa wood frame with ultra low rotational inertia wheels. Because of its lightweight components, the Double-Trouble requires a much smaller pulling force to keep moving, and, uses a longer lever arm in order to extend the pulling force over a greater travel distance. One of the key features to Double – Trouble's success is it's ultra low inertia DVD layers for wheels. DVD layers are half the thickness and have half the rotational inertia of normal CD wheels. The Double-Trouble will travel faster and further than a similar vehicle using CDs or DVDs for wheels. Double-Trouble can be assembled in less than 30 minutes.



Doc Fizzix Products

Your complete source for mousetrap vehicle products
Designs by people who know mousetrap vehicles!

Build Your Own Item # K-700-DF

For ages 10 and up

Specifications

Retail price:	\$9.95
Package size:	22" x 5"
weight::	.50 lbs.
Avalibility:	in stock
Case size:	5 per case



Key Features Include:

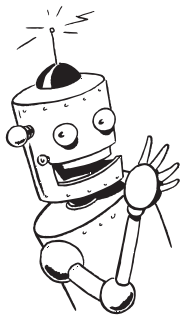
For students who cannot use a kit
The best of our hard-to-find parts
Balsa wood frame
High performance DVD layers
Includes five different secret plans

Parts List:

2 sheets of balsa wood
Low inertia DVD wheels
Wheel spacers
Several brass lever arms
Brass tubing axles
Kevlar reinforced string
Low friction thrust bearings
several Axle hooks
2 Victor mousetrap
Step-by-step plans

Build Your Own Mousetrap Racer

For students who cannot use a kit or need to design their own, Doc Fizzix has put together a complete collection of the most important and hard to find parts that any builder will need to make a great contest winning mousetrap powered vehicle. If you can dream it, you can build it with this build your own kit. Just in case you need some tips or want some help, the build your own kit comes with a collection of five different top-secret plans for building a variety of different vehicles that can all be built with the parts included in the build your own kit. The collection includes balsa wood, brass axles, brass lever arms, axle hooks, Kevlar string, thrust bearings, two Victor mousetraps, and the hard to find ultra low inertia DVD wheel layers, as well as the Doc Fizzix exclusive DVD/CD wheel spacers so you can attach your DVD layers or any standard CD to a 3/16" axle.



Doc Fizzix Products

Your complete source for mousetrap vehicle products
Designs by people who know mousetrap vehicles!

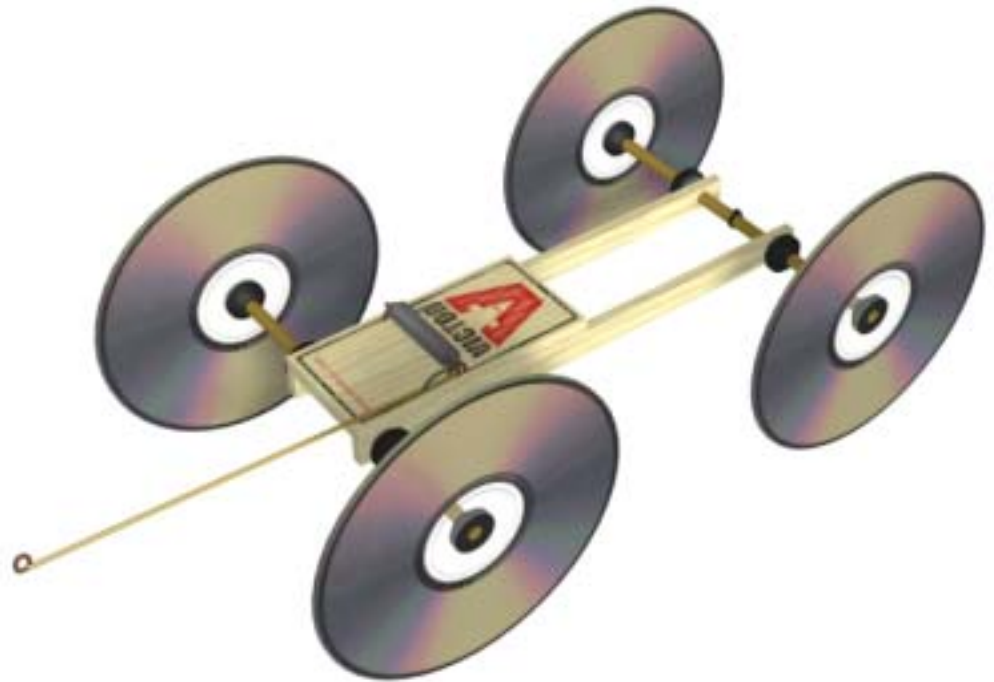
Little Moe

Item # K-050-DF

For ages 10 and up

Specifications

Retail price:	\$7.95
Package size:	10" x 5"
Built size:	12" x 6"
weight::	.35 lbs.
Travel distance	15-30 meters
Availibility:	in stock
Case size:	5 per case



Key Features Include:

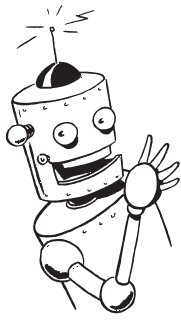
- Entry level MTV kit
- Lightweight parts
- Step-by-step plans
- High performance DVD layers
- Works for distance and speed

Parts List:

- Pre-cut and drilled balsa wood
- Low inertia wheels
- Wheel spacers
- Brass tubing axles
- Brass lever arm
- Kevlar reinforced string
- Low friction thrust bearings
- Axle hook
- Victor mousetrap
- Step-by-step plans

Little Moe Mousetrap Racer

Little Moe is a very lightweight racer designed as an entry level mousetrap vehicle. Do not let the size fool you, Little Moe is one of the fastest racers around and it can travel more than 30 meters. One of the key features of Little Moe's success is the ultra low inertia DVD layer wheels. DVD layers have half the thickness and half the rotational inertia of normal CD wheels, therefore less energy gets stored in the wheels. *Little Moe* will travel further and faster than a similar vehicle using CDs or DVDs for wheels. Little Moe was designed and optimized for success by specialists who know mousetrap racers. Ready to assemble with a pre-cut and drilled frame, *Little Moe* can be assembled in less than 20 minutes and will travel from 15-35 meters for most first time builders.



Doc Fizzix Products

Your complete source for mousetrap vehicle products
Designs by people who know mousetrap vehicles!

DVD Wheels & Axle Set

Item # S-300-DF

For ages 10 and up

Specifications

Retail price:	\$5.95
Package size:	8" x 5"
weight:	.2 lbs.
Availability:	in stock
Case size:	5 per case



Key Features Include:

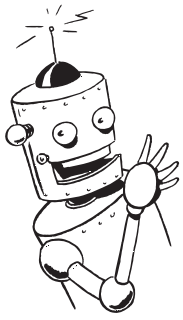
- Four low inertia DVD layers
- Two brass axles
- DVDs can be cut with scissors
- Will out perform all CD wheels
- Designed for Distance and speed

Parts List:

- Low inertia DVD wheels
- Wheel spacers
- Brass tubing axles
- Kevlar reinforced string
- Low friction thrust bearings
- Axle hook
- Step-by-step plans

DVD Wheels and Axle Set

Do you want the **winning performance edge** over the rest of the competition? Stop using those old CDs for wheels. DVD layers are much better than CDs for wheels. DVD layers have half the thickness of a normal CD wheel and therefore have only half the rotational inertia. When using DVD layers for wheels instead of CDs, less energy gets stored into the rotation of the wheels and your racer will be able to accelerate quicker, travel faster, and travel further than a similar vehicle using CDs or regular DVDs for wheels. With DVD layers you will see an incredible increase in distance from 5-15 meters because more of the mousetrap's energy will go into the forward motion of your vehicle instead of the rotational motion of the wheels. Also, DVD layers will have less air-friction than normal CD wheels. DVD wheel set comes with 4-clear DVD wheels, 8-CD spacers, 2-6" axles, 4-thrust washers, 1-axle hook, and 1-meter of Kevlar string.



Doc Fizzix Products

Your complete source for mousetrap vehicle products
Designs by people who know mousetrap vehicles!

CD/DVD Spacer Set

Item # S-500-DF

For ages 10 and up

Specifications

Retail price:	\$4.95
Package size:	6" x 6"
weight::	.2 lbs.
Avalibility:	in stock
Case size:	5 per case



Key Features Include:

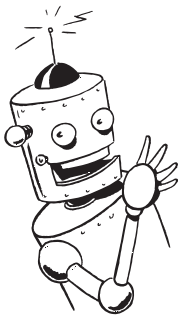
- Designed to fit all CDs & DVDs
- Designed to fit all 3/16" axles
- Made of a flexible urethane
- Used by top builders
- Designed for mousetrap racers

Parts List:

CD/DVD wheel spacers (20)

CD/DVD Spacer Set

If you are trying to use CDs/DVDs for wheels on your mousetrap powered project then you will definitely need our special CD/DVD wheel adapters. The CD/DVD wheel spacer is designed to fit perfectly inside the hole of a normal CD/DVD so it can then be attached to a standard sized 3/16" brass axle. Made of flexible rubber and designed by Doc Fizzix for mousetrap powered racers, these spacers can also be used to center an axle between the frame of your vehicle to cut down on the "side-to-side" movement of an axle. This is a hard to find item and is a "must have" part for making a mouse trap powered racer. CD/DVD spacers come in a pack of 20.



Doc Fizzix Products

Your complete source for mousetrap vehicle products
Designs by people who know mousetrap vehicles!

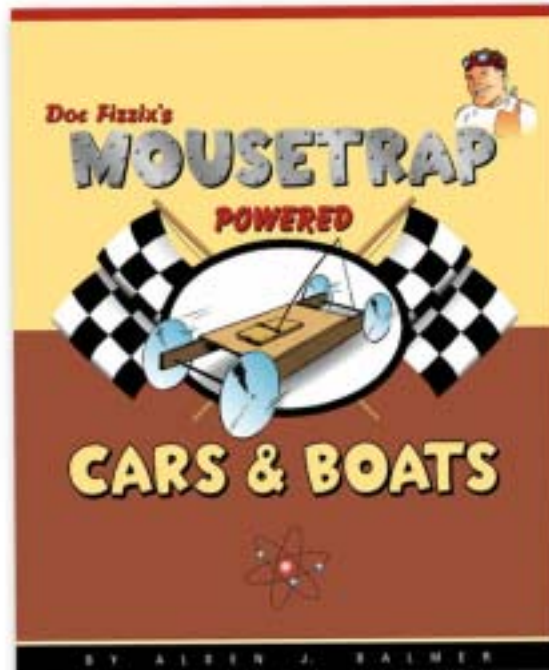
Secrets to Success

Item # B-100-DF

For ages 10 and up

Specifications

Retail price:	\$14.00
Package size:	9" 1/2" x 7" 1/2"
weight::	.95 lbs.
Page count:	149 pg
Availibility:	in stock
Case size:	5 per case



Key Features Topics:

Science of mousetrap racers
Step-by-step plans
Construction secrets
Formulas and calculations
Activities for testing your racer
Trouble shooting guide
Designed for teh visual learner
For all ages

Mousetrap Cars: the Secrets to Success

Selected by students and teachers world wide as the **best** single resource available for building mouse trap powered vehicles. This is the only resource available that will teach you the science and the physics behind building a winning mousetrap powered vehicle.

- * Guaranteed to help you build the best mousetrap powered racer!
- * **Easy step-by-step guide** for beginners and seasoned veterans alike!
- * The **most up-to-date**, informative, and extensive mousetrap vehicle manual ever!
- * All new **earth-shattering secrets** you won't find **anywhere else!**
- * The **#1 selling** and the original book on mousetrap powered vehicles

It is absolutely packed with **tips, tricks, and secrets**. With far more valuable content than any other mousetrap vehicle publication, it is hands down the best guide available!

